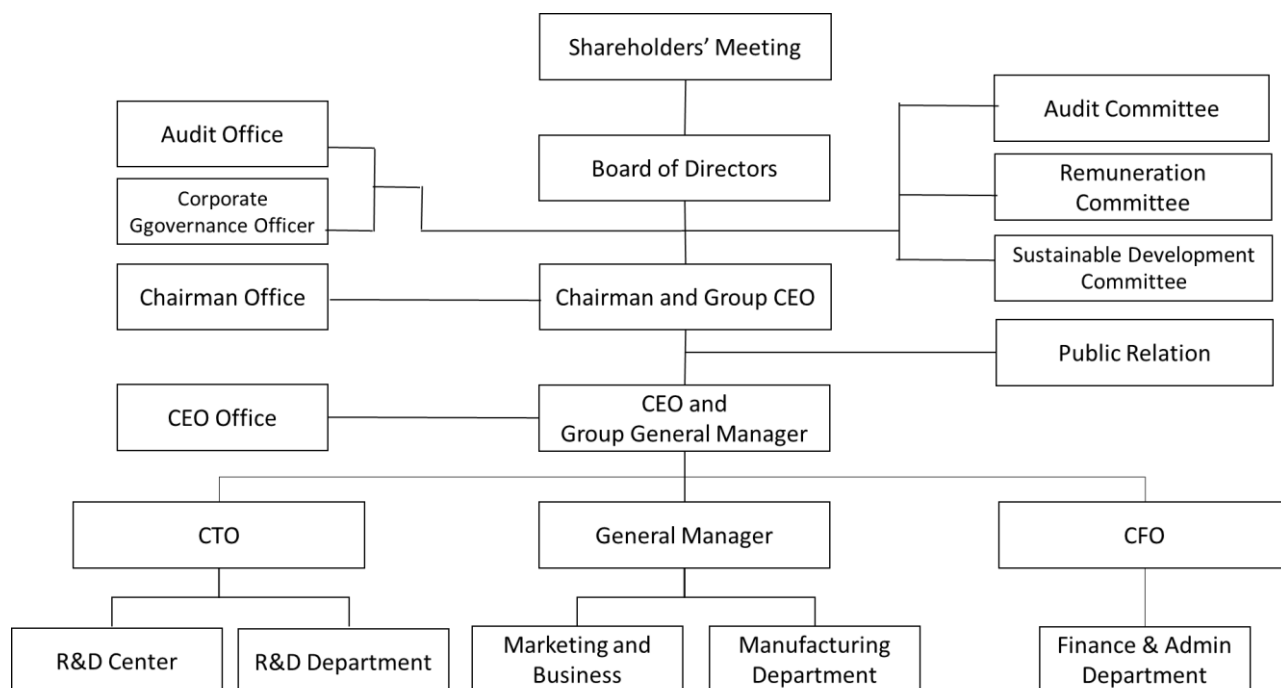


K LASER TECHNOLOGY INC

Organization Chart



Functions of All Main Departments

Main Department	Functions of All Department
Chairman Office	* Enterprise Development * Public Relation
Audit Office	* Check and evaluate the correctness, reliability, efficiency and effectiveness of the company's internal control, and then provide improvement suggestions to promote business efficiency and effectively implement internal control.
CEO Office	* Enterprise Policy and Management * Subsidiaries Management
CFO	* Planning and Managing the Finance, Accounting, Tax and Investors Relationship
CTO	* Integrating and Managing the Company's R&D team, resource, and environment to increase R&D efficiency
Finance & Admin Department	* Financial scheduling, fund management, collection, production and analysis of accounting data, stock affairs handling, etc. * Related Parties Support
Manufacturing Department	* Manufacturing of Products
R&D Department	* Products R&D
Marketing and Business Department	* Sales, Promotion and Export of Products